

ST. LUCIA at Silver Shells, a condominium

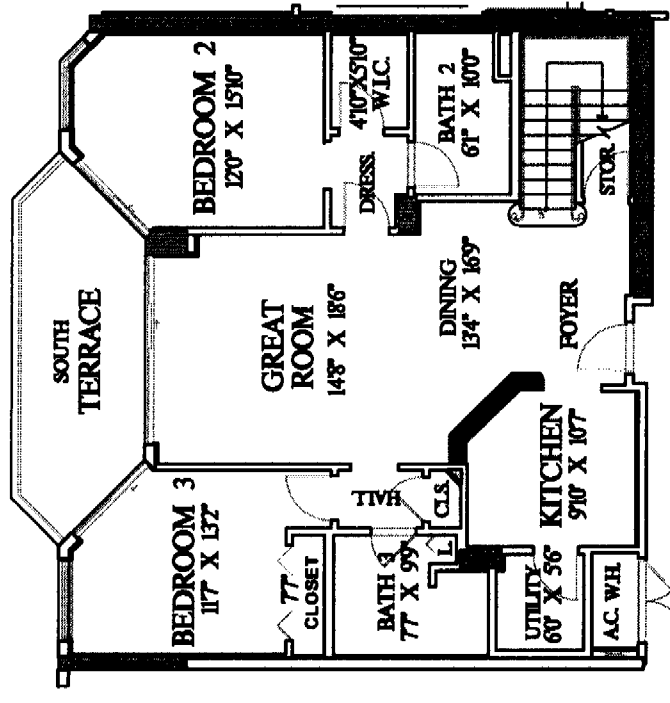
IN LOTS 3 & 8A, SILVER SHELLS BEACH RESORT, A PLANNED UNIT DEVELOPMENT (PLAT BOOK 18, PAGES 57 & 58) IN UNDIVIDED TOWNSHIP 2 SOUTH, RANGE 22 WEST, CITY OF DESTIN, OKALOOSA COUNTY, FLORIDA



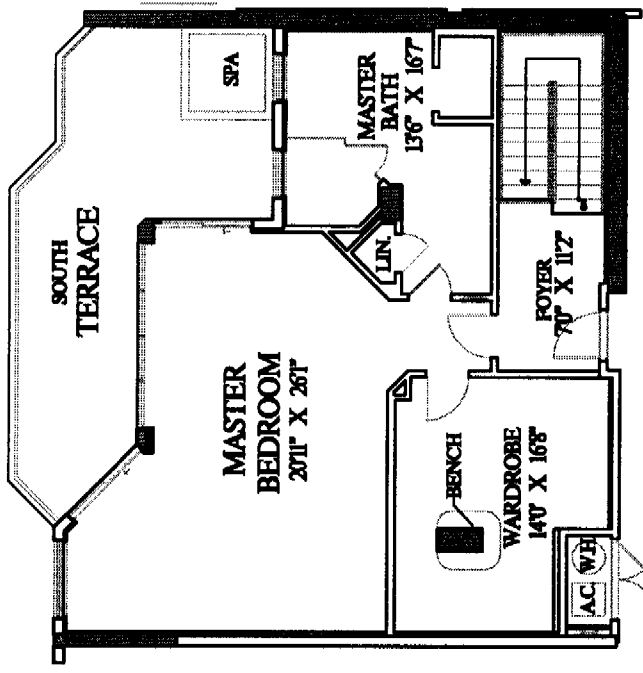
NOTE: BALCONIES/TERRACES ARE LIMITED COMMON ELEMENTS.

PENTHOUSE PH-5

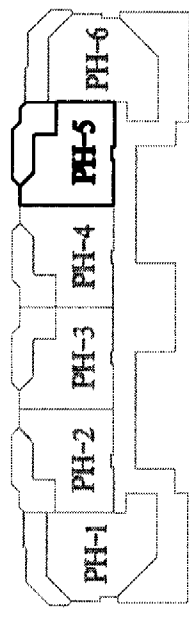
3 BEDROOM / 3 BATH	
ENCLOSED AREA	2,493 SQ. FT.
TERRACE AREA	506 SQ. FT.
TOTAL RESIDENCE	2,999 SQ. FT.



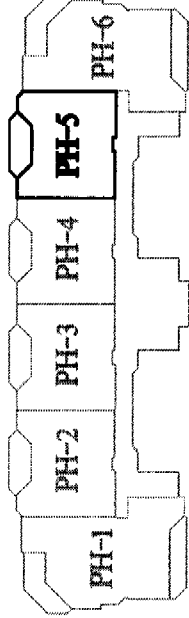
WEST GALLERY
LEVEL 14



WEST GALLERY
LEVEL 15



KEY PLAN - LEVEL 15



KEY PLAN - LEVEL 14

ANNEXED TO AND EXPRESSLY MADE A PART OF THE DECLARATION OF CONDOMINIUM

ST. LUCIA at Silver Shells,
a condominium

97-234-R

SHEET 20 OF 25 SHEETS

Prepared by: **CHOCTAW ENGINEERING, INC.**
 CIVIL ENGINEERING • ENVIRONMENTAL • SURVEYING
 112 TRUXTON AVENUE LB #1532 E-MAIL: ce@choctaweng.com
 FORT WALTON BEACH, FL 32547 Tele: 850/862-6611 Fax: 850/868-8059